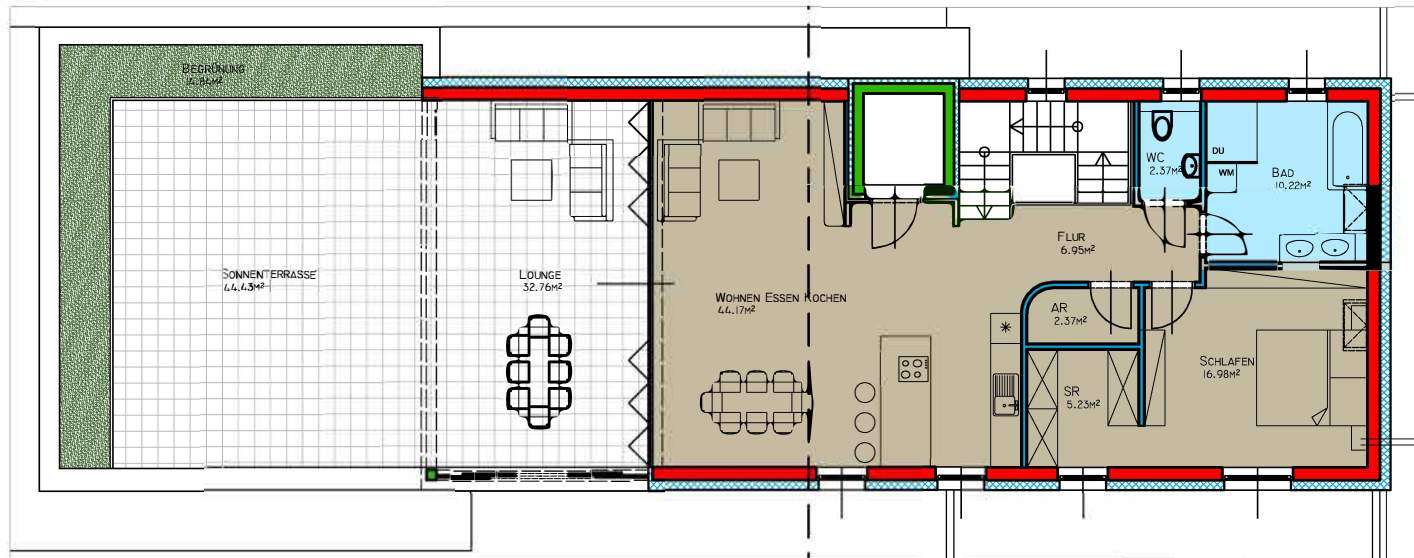
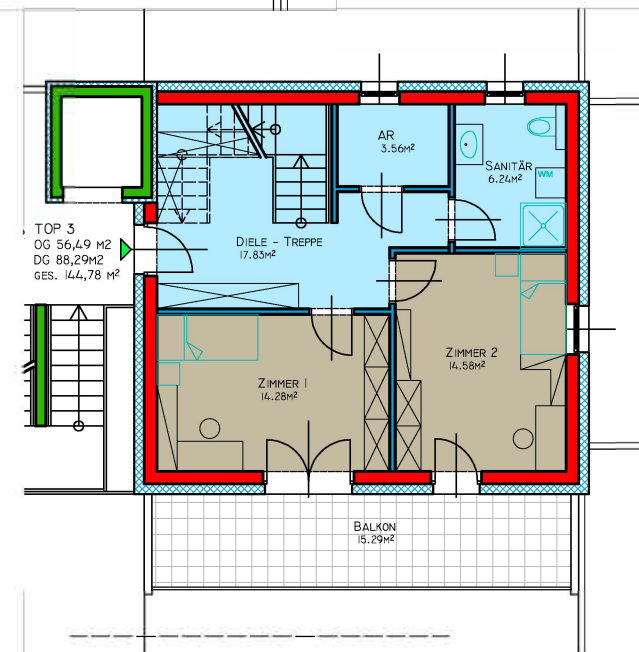


# WOHNUNG TOP 3

"ILWOFGASSE 22, 8052 GRAZ"



TOP | OG



TOP 3  
OG 56,49 m<sup>2</sup>  
DG 88,29 m<sup>2</sup>  
GES. 144,78 m<sup>2</sup>

TOP | DG

WOHNNUTZFLÄCHE	56,49 m <sup>2</sup> (OG) + 88,29 m <sup>2</sup> (DG) = 144,78 m <sup>2</sup>
GESCHOSS	OG+DG
ZIMMER	2 (OG) + 2 (DG) = 4
TERRASSE	15,29 m <sup>2</sup> (OG) + 32,76 m <sup>2</sup> (DG) + 44,43 m <sup>2</sup> (DG) = 92,48 m <sup>2</sup>
BGRÜNUNG	14,84 m <sup>2</sup>
PKW-ABSTELLPLATZ	1 (2 MÖGLICH)

